


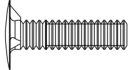
RECESSED TRIM INSTALATION

Assembly Instructions

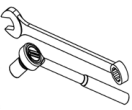
Fasteners & Tools Needed

The following items are found in the hardware kit shipped with the lockers and accessories.

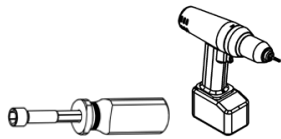
8672–Nut 10-24 

8635- Screw 10-24 x 3/4" 

You will need these tools to assemble recessed trim onto lockers.

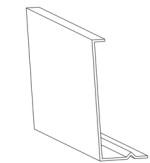
Socket wrench and End wrench 

Drill or Nut Driver with 3/8" bit.

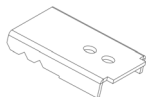


STEP 1- Identify Parts

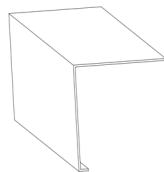
Unpack the component pieces. The following are parts you could have: top trim, trim clip, bottom trim, right hand trim, left hand trim, top splice or cap, filler and wall angle.



Top trim



Trim clip



Bottom trim



Right hand trim



Left hand trim



Top splice or cap



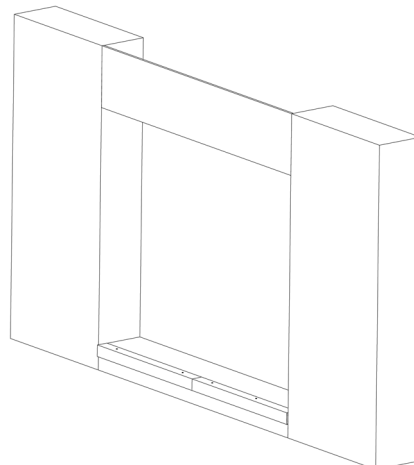
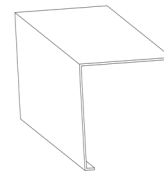
Filler



Wall angle

Install bottom trim

1A- Install bottom trim by cutting and placing it on the base. This should be cut to fit the recessed opening. Use anchors (by installer) to hold in place.



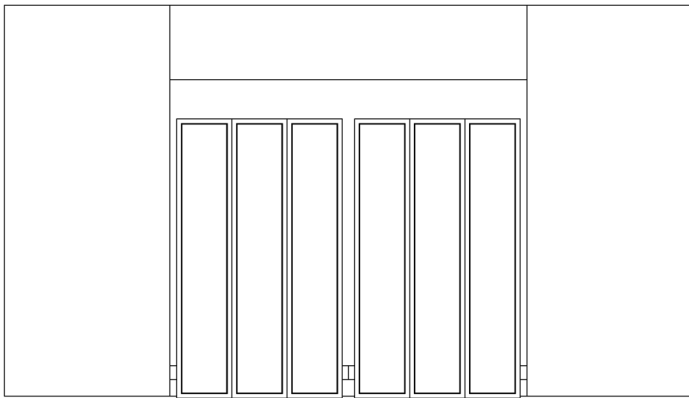
800-562-1000

www.pencoproducts.com

RECESSED TRIM INSTALATION

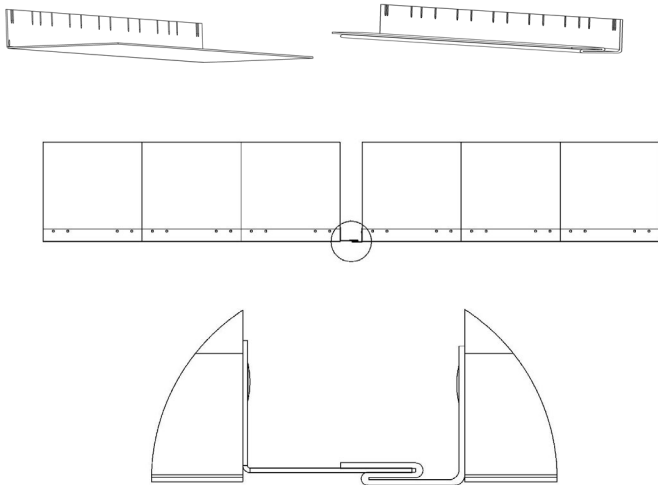
Assembly Instructions

1B- Align locker groups **in front** of recessed opening in approximate position they would go inside the opening. The optimal opening for recessed trim is locker run plus 3". The minimal opening is the locker run plus 1-1/2" and the maximum opening without a filler is the locker run plus 5". If the opening exceeds the maximum it will require a filler and wall angle which are placed in the middle of the locker run.

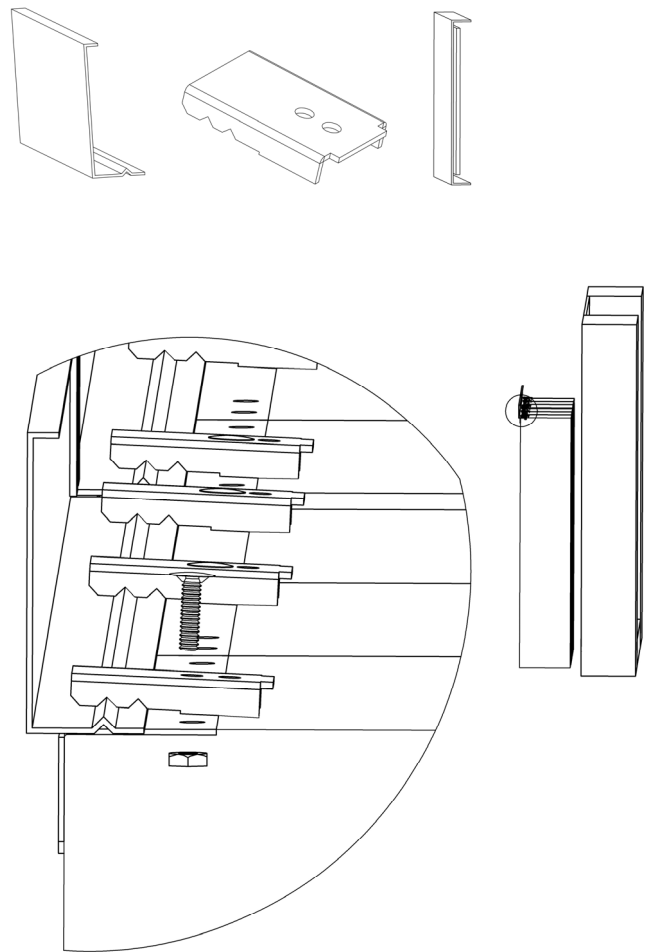


Install wall angle and filler if necessary

1C- Filler and wall angle installation. Cut filler and install it with wall angle to locker sides to fit within the minimum and maximum tolerance of recessed trim requirements. These will be anchored to the locker sides using the existing nut and bolts.

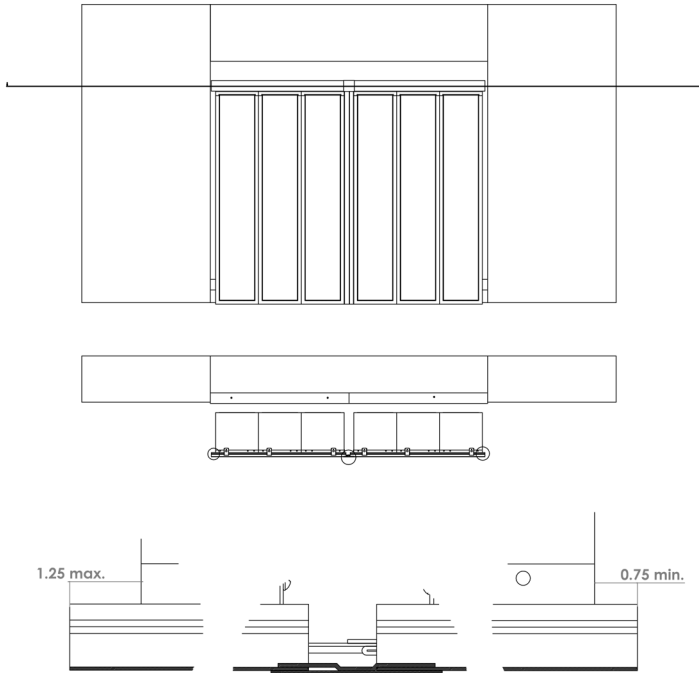


1D- Install top trim and splices. The top trim should be cut so that with splices installed it extends beyond locker run on both ends by at least 3/4" and not more than 1-1/4". This is so that the side trim will fit properly. If no side trim is going to be used cut top trim to fit recessed opening. Anchor top trim to locker tops using trim clips and 8635 bolts (3/4" long) and 8672 nuts as needed. **(Note do not tighten these nuts and bolts as they may/will need to slip out for side trim installation.)**

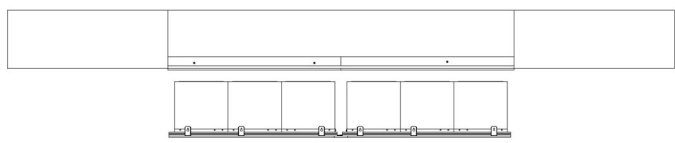


RECESSED TRIM INSTALATION

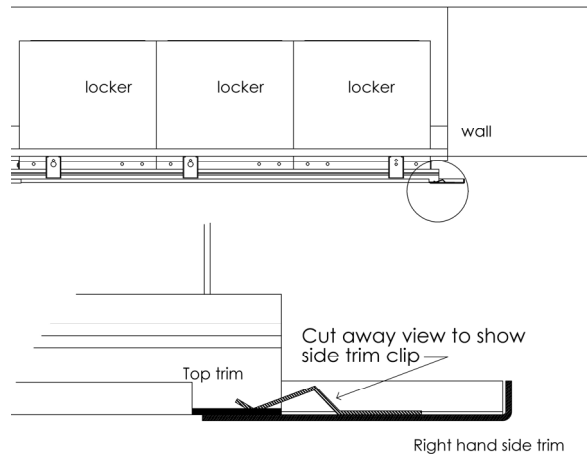
Assembly Instructions



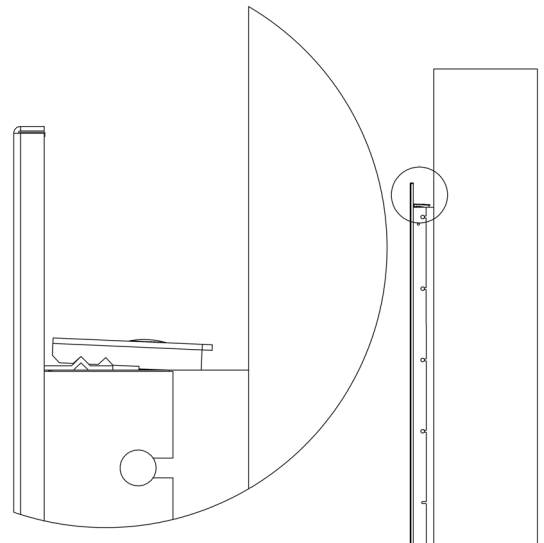
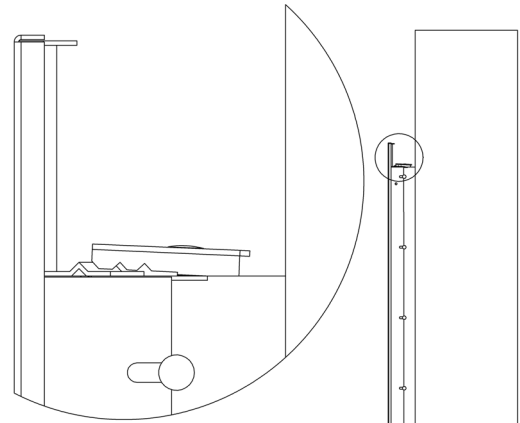
1E- Place the locker groups into the recessed opening leaving enough room to add the left and right side trim to the locker sides. When adding left and right side trim insert the top trim into the side trim clip. Side trim uses existing nuts and bolts and is fastened to the locker sides.



Insert locker group into recessed area leaving space for installing side trim.



It may/will be necessary to slip the top trim out of the top trim clip to fit it into the side trim clip and then slip it back into top trim clip and then into bolts of the lockers sides as shown below.



800-562-1000

www.pencoproducts.com

RECESSED TRIM INSTALATION

Assembly Instructions

Step 1F- Move lockers to final position in the recessed opening. Tighten all nuts on lockers and trim and anchor lockers according to local and state codes.

